



The Geography Teachers' Association of NSW
2016 HSC Geography Excellence Awards Ceremony

TOP TEN HSC GEOGRAPHY AWARDS

STUDENTS

1. Andreas Orsmond
2. Elise Diamond
3. Ash Clearly
4. Marnie Elise Clarkson
5. Declan Connor Murdoch
6. Rebecca Diaz
7. William Thomas Thackway
8. James Kalas
9. Sarah Jean Healey
10. Elaine Huynh

SCHOOL

- Sydney Grammar School
- Wenona School
- Sydney Grammar School
- Abbotsleigh
- The Kings School
- Stella Maris College
- Fort Street High School
- Sydney Grammar School
- Abbotsleigh
- Meriden School

TEACHERS

1. Paul Corkin
2. Sue Kerr
3. Brett Marturia
4. Sean Kelleher
5. Drew Collins
6. Margaret Heraghty
7. Robbie Begg
8. Brett Marturia
9. ?
10. Vanessa Santoro



**Urban
Growth
NSW**

GTANSW wishes to thank Belinda Thompson,
Schools and TAFE program Manager,
UrbanGrowth NSW for presenting the 2016
HSC Geography awards.

2016 Arthur
Phillip Fieldwork
Awards



Fieldwork & Visual Presentation Award

First Place

Niamh Elliott-Brennan

Jhu Htet Maw

Aarthi Murra

Year 9, Fort Street High School

Teacher: Robert Begg

Synopsis: The LGBT Community in Canterbury

Second Place

Kristy Yeats

Yuntao Jiany

Sarah Tran

Year 9, Fort Street High School

Teacher: Robert Begg

Synopsis: The art of Graffiti in Bankstown

Fieldwork & Visual Presentation Award

Equal Third Place

Runkai Hong

Alison Hwang

Year 9, Fort Street High School

Teacher: Robert Begg

Synopsis: Epping Schools Research Action Plan

Equal Third Place

Anneka Tan

Year 9, Meriden School

Teacher: Julie Shannon

Synopsis: Factors Causing Change in North Strathfield

Fieldwork & Visual Presentation Award

Equal Highly Commended

Tilda Stafford

Year 9, Meriden School

Teacher: Julie Shannon

Synopsis: Change in the Leichhardt Community

Equal Highly Commended

Lily Yang

Year 9, Meriden School

Teacher: Julie Shannon

Synopsis: Factors Causing Change in Burwood

Global Education Fieldwork & Research – Stage 4

First Place

Caitlin Ping

Year 7, Irrawang High School

Teacher: Clair Wotton

Synopsis: Olympic National Park in USA

Global Education Fieldwork & Research - Stage 5

First Place

Mia Specia

Year 10, St Mary Star of the Sea College
Wollongong

Teacher: Lisa Kendell

Synopsis: The Effect of Pokémon Go on
Wollongong's Local Economy

Second Place

Alicia Baines

Year 10, St Mary Star of the Sea College
Wollongong

Teacher: Lisa Kendell

Synopsis: LGBTQ Community in Wollongong

Global Education Fieldwork & Research -Stage 5

Third Place

Jiselle Perez

Year 10, St Mary Star of the Sea College
Wollongong

Teacher: Lisa Kendell

Synopsis: Homelessness in Wollongong

Global Education Fieldwork & Research- Stage 5

Equal Highly Commended

James Foster

Jacob Irlam

Chloe Jenner

Georgia Sulis

Telika Willis-Monk

Year 10, Irrawang High School

Teachers: Catherine Donnelly and Kate Connor

Synopsis: Reducing Food Miles at Irrawang High School

Equal Highly Commended

Emma Ackers

Chloe Barnes

Georgia Casumaro

Thomas Mildren

Nicholas Oswald

Year 10, Irrawang High School

Teachers: Catherine Donnelly and Kate Connor

Synopsis: Sustainability at Irrawang High School- Solar Panel Proposal

6

Global Education Fieldwork & Research – Stage

First Place

Gabriel Laurence Van Duinen

Year 11, Australian International School
Singapore

Teacher: Neisha Pratt

Synopsis: Tioman Island Rainforest

Dr Don Biddle Issues in Australian Environments Fieldwork Awards

Equal First Place

Naomi Poscoliero

Year 10, St Mary Star of the Sea

Teacher: Lisa Kendell

Synopsis: The impact of urban development in the Tramway Woodland and Sandy Point area.

Equal First place

Grace Wong

Year 10, Tara Anglican School for Girls

Teacher: R Wood

Synopsis: The interaction of the physical and human elements of the coastal area in Cronulla

Dr Don Biddle Issues in Australian Environments Fieldwork Awards

Equal Second Place

Morley Cromwell

Year 10, Trinity Catholic College Lismore

Teacher: Dana Barnsley

Synopsis: Household waste and how the household can minimise the use of grocery waste plastic bags

Equal Second place

Charlotte Sasse

Year 10, SCEGGS Darlinghurst

Teacher: Darryn Sullivan

Synopsis: Tourism in the Blue Mountains

Dr Don Biddle Issues in Australian Environments Fieldwork Awards

Equal Third Place

Jia Mc Laren

Year 10, Trinity Catholic College Lismore

Teacher: Dana Barnsley

Synopsis: Investigating the issue of sustainability in the use of tea bags

Equal Third Place

Jishita Sathyanarayanan

Year 10, Tara Anglican School for Girls

Teacher: J Wong

Synopsis: Investigating the issue of coastal management in Cronulla

Dr Don Biddle Issues in Australian Environments Fieldwork Awards

Equal Highly Commended

Zali Drew

Year 10, Trinity Catholic College Lismore

Teacher: Dana Barnsley

Synopsis: Sustainability in the use of coffee pods

Equal Highly Commended

Felicity Hickey

Year 10, Denison College Bathurst

Teacher: Heidi Waldron

Synopsis: Stewarts Mount Recycling Facility

Brock Rowe Senior Geography Project

First Place

Lizzy Mee

Year 11, Merewether High School

Teacher: Rachel Tonks

Synopsis: Impacts of the Bitou Bush on coastal areas in Newcastle

Brock Rowe Senior Geography Project

Equal Second Place

Aidan Lam

Year 11, Sydney Grammar School

Teacher: Shona Newall

Synopsis: The Lock Out Laws in Sydney

Equal Second Place

Gabriel Laurence Van Duinen

Year: 11, Australian International School
Singapore

Teacher: Neisha Pratt

Synopsis: The quality of the land and water in
the Upper Kangaroo River

Brock Rowe Senior Geography Project

Equal Third Place

Jemma Harbison

Year 11, Merewether High School

Teacher: Rachel Tonks

Synopsis: Parking practices in Inner Newcastle and CBD

Equal Third Place

Zahra Spitznagel-Reeves

Year 11, St Mary Star of the Sea College

Teacher: Adam Everatt

Synopsis: The social, economic and environmental impacts of deer in Mt Kembla

Brock Rowe Senior Geography Project

Equal Highly Commended

Sally Adams

Year 11, SCEGGS Darlinghurst

Teacher: Angela Pizzinga

Synopsis: The impacts of the residential development on Tilba Avenue Balmain

Equal Highly Commended

Caitlyn Young

Year 11, Merewether High School

Teacher: Rachel Tonks

Synopsis: The effect of agricultural practices on the water quality of the Williams River

Dr Maurine Goldston-Morris Civic & Citizenship Award

First Place

Jessie Dennett

Phebe Farrawell

Dakota Gordon

Mitchell Swan

Year 10, Irrawang High School

Teachers: Catherine Donnelly and Kate Connor

Synopsis: Sustainable School Project- Proposal to install a water tank at Irrawang High School

Second Place

Jacobi Patrick

Marienus Plooy

Hagan Zak

Year 10, Irrawang High School

Teachers: Catherine Donnelly and Kate Connor

Synopsis: Sustainable School Project- Expanding Recycling at Irrawang High School

Dr Maurine Goldston-Morris Teacher Awards

1. The GTA Fieldwork and Visual Presentation

Robert Begg

Fort Street High School

2. The Global Education Fieldwork and Research

Lisa Kendell

St Mary Star of the Sea College

3. The Dr Don Biddle Issues in Australian Environments Fieldwork

Dena Barnsley

Trinity Catholic College Lismore

4. The Brock Rowe Senior Geography Project

Rachel Tonks

Merewether High School

5. The Dr Maurine Goldston-Morris Civic and Citizenship Award

Catherine Donnelly

Irrawang High School

SydneyOlympicPark

GTANSW wishes to thank Danielle Leggo, Education coordinator, Sydney Olympic Park Authority for presenting the 2016 Arthur Phillip Fieldwork awards.



An Honorary Life Membership is a special award recognising distinguished service to the Geography Teachers Association of NSW. The award is an acknowledgement by his/her colleagues of outstanding contributions to the Association, rather than positions held.

Presented by Lorraine Chaffer
President GTANSW

Detailed citations in the Conference Program

The Geography Teachers' Association of NSW

Honorary Life Membership Award

PAUL ALGER



Long time GTANSW member and councilor

Positions held : Minutes Secretary over 15 years

Paul has given generously of his time and expertise, continuously supporting GTANSW activities such as conferences, professional learning events, the coordination and evaluation of GTA resources, office relocation and the marking of fieldwork projects for the Arthur Phillip Awards.

PTC Outstanding Professional Service Award

DR. GRANT KLEEMAN



GTANSW member and councilor 1996 - present

Positions held include President, Vice president, Honorary Treasurer, Editor of Geography Bulletin, AGTA Director and President.

Continuous involvement in programs and activities particularly conference organisation for teacher professional development and HSC student lectures. Bulletin editor and contributor.

GTANSW Fellowship

PTC Outstanding Professional Service Award

McDonald Holmes Medal (Geographical Society of NSW & GTANSW)

NICK HUTCHINSON



Long time GTANSW Member and councilor

Positions held included President, Vice president, Secretary and Editor (Geography Bulletin), AGTA Director

ACARA Curriculum panel

AGTA Don Biddle Friend of Geography Award

GTANSW Geoff Conolly Award (Bulletin articles)

GTANSW Fellowship

PTC Outstanding Professional Service Award

McDonald Holmes Medal (Geographical Society of NSW & GTANSW)

BARBARA HEATH



GTANSW Member since 1960

GTANSW Councilor 1971 – 2013

Positions held include:

Minutes Secretary 5 years

Program Committee for over 15 years in which she took responsibility for organising venues, speakers and conference activities for many teacher conferences and HSC student lectures

GTANSW Fellowship awarded for distinguished service to the Geography Teachers Association of New South Wales in 1992

DR SUSAN BLISS



GTANSW member since 1961

GTANSW Councilor 1981 – 2013

Positions held include GTANSW Councilor, President, Vice president, Editor (Geography Bulletin), AGTA Director, Business Manager and Treasurer.

Continuous involvement in professional learning programs state wide; contributions to the Geography bulletin; grant applications; production of resources and links to other organisations across all scales.

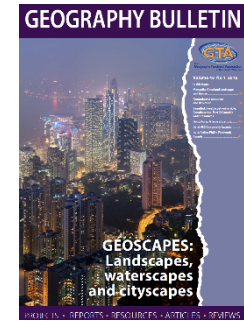
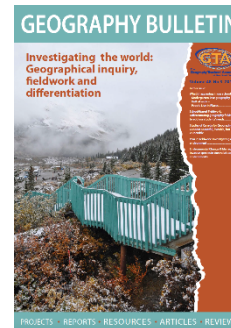
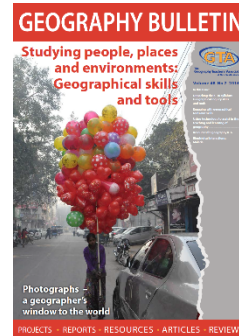
GTANSW Geoff Conolly Award (Bulletin articles)

GTANSW Fellowship

PTC Outstanding Professional Service Award

McDonald Holmes Medal (Geographical Society of NSW & GTANSW)

An award for an outstanding contribution to the Geography Bulletin



Presented by DR Grant Kleeman
Vice President GTANSW

Detailed citations in the Conference Program

The Geography Teachers' Association of NSW

Geoff Conolly Award

The Geography Teachers' Association of NSW

Geoff Conolly Award

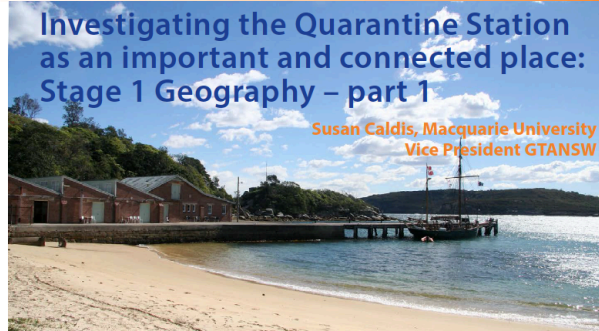
SUSAN CALDIS



FIELDWORK

Investigating the Quarantine Station as an important and connected place: Stage 1 Geography – part 1

Susan Caldis, Macquarie University
Vice President GTANSW

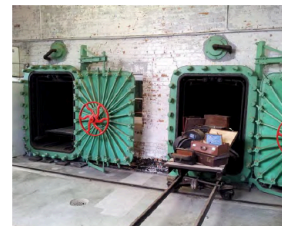


Quarantine Wharf and disembarking passengers' Luggage Store. Photo: J. Sillar

Abstract: The former North Head Quarantine Station (now known as the 'Q Station') is located in Sydney Harbour National Park, Manly. Whilst it is typically perceived as a local site of significance and an integral part of Sydney and Australia's history, it is also important geographically. The Q Station exudes the richness of place and reveals the diversity of interconnections between humans and environment, the meanings attached to place, and the ways in which Australia became connected to other countries. This article positions the Q Station as an opportunity to integrate both units of Stage 1 Geography (*Features of Places; People and Places*) through fieldwork and secondary research, thus the assumption is made that students will visit the Q Station as well as complete tasks during class time. It is intended for this article (parts 1 and 2) to be seen as a scaffold of potential ideas for teachers to adopt or adapt as appropriate to school context and student learning requirements. Whilst the lens remains geographical for this piece of work, it should be noted there are authentic opportunities to further integrate this learning with Stage 1 History (particularly *The Past in the Present*) and Stage 1 Science (particularly *Built Environments* and *The Living World*). All photographs are taken by Susan Caldis unless otherwise stated.

Background context: Prior to the arrival of British invaders in 1788, the headland and surrounding area that is now known as North Head and Sydney Harbour National Park were important ceremonial and spiritual grounds for the Gayimai and Cameraigal traditional owners, who were the local clans. The Quarantine Station commenced operation in 1833 as a place of isolation

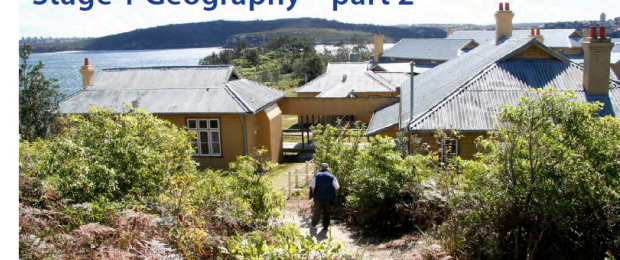
for people travelling to Australia who were suspected of carrying contagious diseases such as Spanish Influenza, Smallpox or Bubonic Plague. This strict quarantine was enforced in the hope that these deadly diseases would not spread to the general population already living in Sydney. The local Aboriginal communities were the earliest victims of introduced diseases in the colony, such as smallpox. This disaster could have been prevented or minimised had quarantine processes been in place from the time of the colony's establishment. Around the Q Station there are many inscriptions carved in to the sandstone, trees, bricks and walls which reveal the diversity of cultural and social backgrounds of the quarantined migrants. For further information please see <http://www.quarantinestation.com.au/About/History/>



Steam autoclaves, where passengers' luggage was taken on disembarkation for disinfection on arrival Wharf Precinct. Photo: J. Sillar

FIELDWORK: INVESTIGATING THE QUARANTINE STATION

Investigating the Quarantine Station as an important and connected place in Stage 1 Geography – part 2



Hospital Precinct, Quarantine Station. Photo: J. Sillar

Features and People of Place: an investigation of the Q Station

Why is the Q Station an important place?

Contextual activity: Before investigating the Q Station specifically, ask students to identify a place that is important to them and provide one reason why. This could also be discussed using a visual representation of the school to prompt responses. This will refresh and build on learning from Early Stage 1 about place.

Acquiring and communicating: Brainstorm and discussion

Why is our school an important or special place?



Source: Click Art



Rock engravings in the Wharf Precinct, Quarantine Station. Photos: J. Sillar

Is there another place that is important or special to me? What is this place? Why is it important or special?

Student responses can be provided verbally and/or in a picture, photograph or drawing (their own or found on through a web search) and/or in written words but should be captured by the teacher for example, on the whiteboard, in Google docs, via an App etc, to enable further discussion and categorisation.

Processing and communicating: Referring to the student responses above, ask students how many important places are buildings, or how many important places are related to family and friends, or how many important places are only for certain activities (the questions about categories will be informed by the student responses). A place might fit in to more than one category. Data could be represented in a table. This table can be jointly constructed by the class, an example follows.

The Geography Teachers' Association of NSW

Geoff Conolly Award

LORRAINE
CHAFFER



Studies of Canada for Geography 7–10

Canada: Beautiful, liveable, but vulnerable

Lorraine Chaffer, Vice President GTA NSW
Geography Education Consultant
Author: Geography teaching resources



Spirit Island in Maligne Lake, Jasper National Park, Alberta, Canada (Part of the Canada Parks World Heritage Area). Image: L. Chaffer

PART 2: SELECTED LANDSCAPES and LANDFORMS, VALUES and PROTECTION

SYLLABUS LINKS

CONTENT (<http://syllabus.bos.nsw.edu.au/hsie/geography-k10/content/1185/>)

Landscapes and landforms

- Landscapes and the geomorphic processes that create distinctive landforms
- The values of landscape and landforms
- Ways people manage and protect landscapes

GLOSSARY (<http://syllabus.bos.nsw.edu.au/hsie/geography-k10/glossary/>)

Glaciated landscape: shaped by the action of icesheets and glaciers

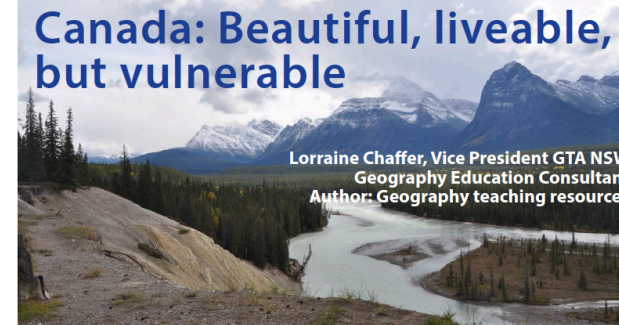
Fluvial landscape: shaped by the action of a stream or river

Volcanic landscape: shaped by tectonic forces in Earth's crust that cause volcanic eruptions

Studies of Canada for Geography 7–10

Canada: Beautiful, liveable,
but vulnerable

Lorraine Chaffer, Vice President GTA NSW
Geography Education Consultant
Author: Geography teaching resources



The Bow River on its journey from the Rocky Mountains to the sea. Photo: L. Chaffer

Part 4: THE BOW RIVER WATERSCAPE

Part 1 in this series of articles "Canada: beautiful, liveable, yet vulnerable" investigated Canada's landforms, landscapes and biomes and its vulnerability to natural hazards.

Part 2 was a study of selected Canadian landforms, the geomorphic processes responsible for their formation, associated values and the protection of those values.

Part 3 investigated Canada's water resources and its vulnerability to atmospheric and hydrologic hazards such as storms, drought and flood.

Part 4: contains three approaches to geographical inquiry into the Bow River catchment using geographical skills and tools

Geographical inquiry three ways

SYLLABUS LINKS

CONTENT: Water in the world

- How the operation of the water cycle connects people and places
- The quantity and variability of water resources
- The economic, cultural, spiritual and aesthetic values of water for people
- The nature of water scarcity and ways of overcoming

CONTENT: Life skills Water in the world

- The importance of water for sustaining life
- The extent to which fresh water is available and accessible.
- Sources of water for human use and the
- Different ways people use water.
- Factors that affect access to fresh water
- Strategies used to preserve water.
- The value of water to different people across the world.

(<http://syllabus.bos.nsw.edu.au/hsie/geography-k10/content/1185/>)